

Simple Approach



Estate Agents



**11 Lochy Street, Blairgowrie  
PH10 6DS**

**Offers over £137,000**

Simple Approach are pleased to welcome this semi detached cottage on Lochy Street to the residential sales market. Set within a highly sought after location, Lochy Street could not be better situated to take advantage of all local amenities found just a short distance away. This spacious property is set across one accessible floor and comes to the market in good move in condition throughout, comprising of; a sizeable kitchen, a bright front facing lounge, two generous bedrooms and a bathroom with shower over bath facility. This lovely property benefits from sought after features such as; gas central heating, double glazing, ample on street parking and a private rear garden. Lochy Street lends itself to a wide range of buyers such as first time buyers, investors or a small family looking for a well located home in one of Perth's most sought after areas, viewing is essential to appreciate the fantastic home on offer.

### **Bedroom**

10'9" x 7'2" (3.30 x 2.20)

### **Hallway**

7'2" x 3'11" (2.20 x 1.20)

### **Lounge**

9'4" x 15'10" (2.85 x 4.84)

### **Kitchen**

8'8" x 9'0" (2.65 x 2.75)

### **Bathroom**

5'10" x 4'3" (1.80 x 1.30)

### **Bedroom**

9'4" x 15'7" (2.85 x 4.77)

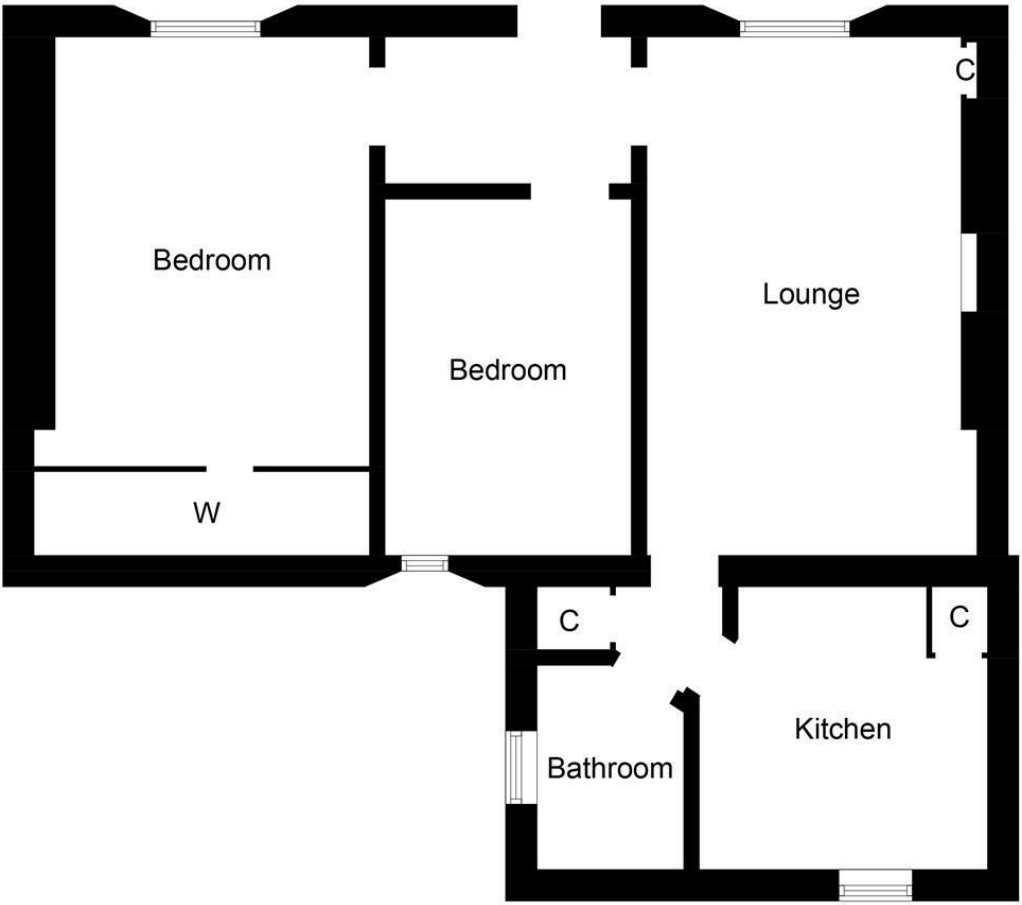






- Semi Detached Cottage
- Bright Front Facing Lounge
- Private Rear Garden
- Two Generous Bedrooms
- Sizeable Kitchen
- Ample On Street Parking
- Highly Sought After Location
- Gas Central Heating & Double Glazing





Energy Efficiency Rating		
	Current	Potential
Very energy efficient - lower running costs		
(92 plus) A		
(81-91) B		
(69-80) C		
(55-68) D		
(39-54) E		
(21-38) F		
(1-20) G		
Not energy efficient - higher running costs		
Scotland		EU Directive 2002/91/EC
Environmental Impact (CO <sub>2</sub> ) Rating		
	Current	Potential
Very environmentally friendly - lower CO <sub>2</sub> emissions		
(92 plus) A		
(81-91) B		
(69-80) C		
(55-68) D		
(39-54) E		
(21-38) F		
(1-20) G		
Not environmentally friendly - higher CO <sub>2</sub> emissions		
Scotland		EU Directive 2002/91/EC